

June 2017

### Special Points of Interest

- New officers
- Recent Programs:
  - Research Day
  - STAR Award
  - Nursing Scope of Practice



#### Inside this issue:

New President Announcement	1
New Officers	2 - 5
Research Day / STAR Award	6
Education: Scope of Practice Program Fundraising	7
Upcoming Programs Recipe Chapter Officers	8

# Tau Tau News

## Your new Tau Tau president Alice Kindschuh

This is an exciting time of the year for Tau Tau with the induction of new board members. This is an opportunity for Tau Tau as new board members bring new ideas, talents, and passions. One of the first orders of business for the new board will be to review the operational and strategic plans. This is Tau Tau's opportunity to create a vision for the chapter moving forward.

What is that vision? Coerver & Byers (2011) maintain that the best way for an organization like Tau Tau to be successful is to help the members be more successful. To do this Tau Tau must focus on what we do well, programs that meet our mission, and efficient use of resources. These resources include time. We have many competing demands for time; what factors inspire you to spend time at a Tau Tau event?

As the Tau Tau Board engages in reviewing our operational and strategic plans, we will consider what projects are meaningful, fun and assist members in performing their work. Through our membership survey, several types of activities were cited as meaningful, helpful to professional goals, and/or fun. We will utilize the results of this survey in our planning. Lastly, we must stay true to the mission of STTI; advancing world health and celebrating nursing excellence in scholarship, leadership, and service (STTI, 2017). After all that is likely what drew you to this professional organization.

I am excited to be your chapter president and look forward the opportunities of the next two years.

Coerver, H. & Byers, M. (2011). *The race for relevance*. Washington DC: ASAE Association Management Press.

Sigma Theta Tau International. (2017) *STTI organizational fact sheet*. Retrieved from <https://www.nursingsociety.org/why-stti/about-stti/sigma-theta-tau-international-organizational-fact-sheet>



Installation of New Officers 2017

## Welcome our 2017 New Board Members and Committee

Deborah Conley

### Vice President

**Tara Whitmore, DNP,  
APRN-NP**



I am a certified family nurse practitioner and am a certified heart failure nurse. I am currently the director of the BSN-DNP family nurse practitioner program at Nebraska Methodist College and a nurse practitioner in cardiology at CHI Health Bergan. I am the President-Elect for Nebraska Nurse Practitioners and am the Membership/Area Representative

Chair for the American Association of Heart Failure Nurses. I am passionate about giving back to the nursing profession. I am organized, a team-player and have forward-thinking ideas. I believe these qualities will be an asset to the Tau Tau chapter. I look forward to serving as the Vice President for the upcoming year.



### Leadership Succession Committee

**Jackie Thielen, MSN, RN,  
APRN-NP, ACHPN**



I am a nurse practitioner and work at Methodist Hospital as the Program Director of Palliative Care. Through my tenure as an RN in variety of roles, I have had the privilege of meeting many very gifted and wise nurses in the Omaha and surrounding communities. I have found that sometimes a personal invitation accompanied by a statement of the gifts they

possess is all the encouragement it takes to bring these talented colleagues to accept a leadership position. I am excited to work with others on the committee to determine the chapter's leadership needs, identify candidates who can best fill those roles, and reach out to them with encouragement to fill vacancies.

**Marilyn Voss, MSN, RN,  
CCM**



I obtained my MSN in Executive Nursing from Nebraska Methodist College in May. I currently work for Nebraska Methodist Health System as the Director of Coding, Clinical Documentation, Utilization Review and the Tumor Registries. I have been in leadership roles of varying degrees for the past 30 years of my career. I value the importance of identifying

and developing future nurse leaders in a rapidly changing health care environment. I have served as a member of the local chapter of Case Management Society of America (CMSA), the Washington County Agricultural Society Board for 10 years and have been a member of the Washington County Extension Board.

## New Board and Committee Members con't

Deborah Conley

## Counselor and Governance Co-chairs

**Kathrine Malmberg,  
MSN, RN**

I earned my Bachelors of Science in Nursing from Creighton University in 1995 and my Masters of Science in

Nursing in 2010 from Nebraska Methodist College (NMC). I am currently a full-time faculty member at NMC. Majority of my workload is dedicated to first semester sophomore level students. A smaller piece of my workload allows me to fulfill other needs as the Dean and Director of Nursing assigns. I also hold a PRN position at Fresenius Medical Care as an outpatient dialysis RN. I have been a member of Sigma Theta Tau International since 1994 inducted into the Lota Tau Chapter November 6. I trans-

ferred my membership to Tau Tau upon joining the NMC family. I have assisted the Tau Tau Chapter as needed, more behind the scenes, thus far but am looking forward to serving in this co-chair position with my colleague, Cheryl Bouckaert. Together, we will determine eligibility and reach out to students for induction into the Tau Tau Chapter, maintain policies and procedures and maintain our presence as part of the Tau Tau Board.

**Cheryl Bouckaert, MSN, RN**

I hold a Master's of Science in Nursing Education and a Bachelor's of Science in Nursing. I am employed at Nebraska Methodist College as an Assistant Professor of Nursing. I co-coordinate

a senior level Gerontological course that runs four times per year. I also teach clinical across the curriculum beginning with freshmen level through senior level courses in both the traditional and accelerated nursing programs. I have served on the Tau Tau board in the past as co-Membership Chair and I have served on the Tau Tau Program Committee since I was inducted in 2011. While serving in these roles, I have gained a greater appreciation for the recruitment and retention of new and current members and of the value

and importance of belonging to a professional nursing organization. As a result, I consistently promote students to join and become involved in a nursing organization of some sort to encourage greater involvement and to create a sense of belonging and, hopefully, greater contribution to the nursing profession and the public for which we serve. Having said that, I also value professional learning and growth while interacting and connecting with peers and colleagues. I am committed to fulfilling this role to best of my ability alongside my colleague, Kate Malmberg.





## New Board and Committee Members con't

Deborah Conley

### Secretary

#### Julie Schlick MSN, RN



I am an Assistant Professor of Undergraduate Nursing at Nebraska Methodist College. I am honored to be selected as Secretary of STTI Tau Tau Chapter. I will be diligent and provide attention to detail in minute taking during meetings. I have not served on the board in the past, but I am eager to contribute to the organization. I welcome this opportunity to

actively engage in the Tau Tau Chapter.



### Fundraising Chair

#### Stacey Miskie BSN, RN, CBN



I have been a member of Tau Tau since its inception, and prior to that, I was inducted into the Methodist Nursing

Honor Society in 1998. I have worked at Methodist Hospital since 1995. I am the Bariatric Program and Enhanced Recovery Program Coordinator. The committees in the hospital that I belong on are numerous but my passion is our Unit Based Council, community services projects. I have always enjoyed volunteering in my hometown of Arlington, NE. I have served on committees and held elected positions but always end up assisting or chairing a fundraiser. A few that I have participated in over the years is the Arlington Music Boosters (11 years) treasurer 5 years. Ar-

lington Community Church Fall Festival (8 yrs) games and craft show chair, Post Prom (8 yrs) Chair 4 years and Parents for Education for Arlington Elementary Public School (5 yrs) treasurer 4 years. I am ready to serve Tau Tau and give 100%. I have been on the membership committee this past year and have volunteered with other fundraising drives that we have had in the past. I enjoy meeting and working with people and networking to see what needs are and what resources we have available.



## New Board and Committee Members con't

Deborah Conley

## Membership Involvement Chair

**Loretta Pierce, MSN, RN,  
NE-BC**

Picture not available

I am new to the Tau Tau chapter of Sigma Theta Tau International, however I have been a member of the Omicron Epsilon Chapter of STTI for several years. I have served as a Director for several terms; Leadership; worked on establishing a

scholarship program for new members; and encouraged new membership by staying current with the times. I enjoy staying active with Sigma and my chapter! I work at Methodist Jennie Edmundson Hospital in Council Bluffs, Iowa. I work as the Nurse Practice and Stroke Coordinator as well as serving in the Administrative Coordinator role.



It has been my pleasure to serve as the Chair of the Leadership Succession Committee for the past 3 years. I have had an engaged group of committee members recruiting candidates. I am confident in the leadership that has been elected to move Tau Tau forward.

Feel free to contact the Leadership Succession Committee members with any questions. Marti Christensen [Marti.Christensen@douglascounty-ne.gov](mailto:Marti.Christensen@douglascounty-ne.gov); Jackie Thielen [Jackie.Thielen@nmhs.org](mailto:Jackie.Thielen@nmhs.org); Marilyn Voss [Marilyn.Voss@nmhs.org](mailto:Marilyn.Voss@nmhs.org); Cynde McCall [Cynde.McCall@nmhs.org](mailto:Cynde.McCall@nmhs.org); or Carole Laninof [thelainofs@cox.net](mailto:thelainofs@cox.net).

*Sincerely,*

Deborah Conley, MSN, APRN-CNS, GCNS-BC, FNGNA

Be an STTI volunteer.



Contact anyone of the Tau Tau Chapter board members if you are interested in volunteering on any of the committees! We could really use your help!

## Research Day and STAR Award

Deb Adams

The first Star Award was presented in 2008 and has become an annual tradition in combination with the Interprofessional Research Day program. 2017 is the 13th year for the program and this year's theme was "How Your Practice Impacts Health." The Research Day program included several nursing students throughout the Methodist community who were present to discuss and answer questions about their research and poster board presentations. The keynote speaker this year was Dr. Beatrice Kalisch, with her presentation on "Errors of Omission: How Missed Nursing Care Imperils Patients." The closing speaker from Methodist Hospital was Jeff Prochaska, MBA addressing the topic: "Health Care Policy: Impact on Consumers and Providers."

The Star Award itself highlights accomplishments of nurses who engage in research and evidence-based practice. The goal of these scholarly endeavors is dual focused: promote healthy work environments while also improving patient outcomes. The Tau Tau Chapter, Nebraska Methodist College, Methodist Hospital and the Methodist Research Day Committee's collaboration culminates in honoring nurses for their work with the presentation of the Star Award.

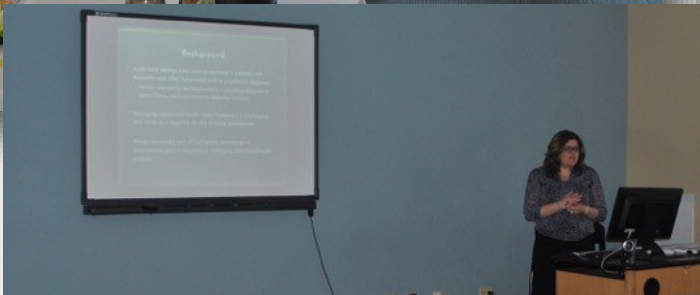
Kathy Marquardt, President of the STTI Tau Tau Chapter, presented the 13th Star Award to Dr. Alice Kindschuh! Dr. Kindschuh's accomplishments are listed:

1. Dr. Kindschuh was the Principal Investigator for the following studies:
  - ♦ The Feasibility of Implementing the Geriatric Resource Nurse Model in a Midwest Emergen-

cy Department (November 2015 to October 2016). The results of the study were presented in several venues between 2016 to 2017.

- ♦ Identifying, Assessing, and Balancing Competing Risks of Multiple Hospital-Acquired Conditions (HACs) This is an AHRO multisite national study in collaboration with the Division of Health Care Policy and Research in coordination with the University of Colorado School of Medicine which began January 2017.
2. Dr. Kindschuh is presently Co-Chair of the Hospital Research and EBP Council.
  3. She is currently mentoring DNP students in their research in a variety of educational settings including Touro University, Creighton University, and Nebraska Methodist College.
  4. Additionally, she mentors nurses who apply to the Nebraska Nurses Foundation for a practice grant to implement EBP, quality improvement or innovative projects through their clinical settings.
  5. Lastly, in 2015, Dr. Kindschuh's White Paper entitled "Aging in Nebraska," was published in the Book of Reports for the 2015 Nebraska Nurse Association Convention and in the Nebraska Nurse (December 2015, January/February 2016).

Customarily the previous Star Award winner speaks during the program. The 12th Star Award winner Aimee Black was unavailable, and Lindsay Hall presented in her place.





## Nursing Scope of Practice Decisions

Roxanne Gould

Ann Oertwich, Ph.D., RN is the Executive Director, Nebraska Board of Nursing, Licensure Unit, Division of Public Health. She presented the Nursing Scope of Practice Decisions Program. This program reviewed the Nebraska statutory and regulatory provisions of the nursing scope of practice, and nursing delegation to unlicensed personnel using the Nebraska Board of Nursing Scope of Practice Decision-Making Model.

The Department of Health and Human Services website was displayed, and Ann provided tips on navigating throughout, as it can be cumbersome.

Two specific legislative proposals were focused on: the dialysis care tech legislative proposal and the LPN-C legislative proposal, as they relate to nursing practice.

As nurses, we need to be a professional voice in the legislature to promote nursing and nursing

care to patients. Ann discussed the Nurse Practice Act, focusing on the importance of being knowledgeable of your credentialing and nursing scope of practice. Current legislative proposals can be viewed on the Nebraska Nurses Association Website provided below.

### [Nebraska Nurses Association - Legislative Affairs](#)

Nebraska nursing regulation Title 172 Professional and Occupational Licensure Chapter 99 Provisions of Nursing Care - 172 NAC 99, clarifies assignment and direction to licensed nurses and supporting staff. The Decision-Making Model to assist in the scope of practice decisions is available on the Department of Health and Human Services website:

### [Decision-Making Model for Determine Scope of Practice](#)



### Five Rights of Delegation:

- **Right task**
- **Right circumstance**
- **Right person**
- **Right direction/communication**
- **Right supervision**

## Fundraising Committee

Janet Syslo

A warm and summery greeting to all Tau Tau members! Your fundraising committee has been working to make all the arrangements for a 2018 Physicians calendar to sell at all three Methodist hospitals, our clinics, and the college starting in October of this year. This effort will help increase our foundation fund used for nursing scholarships. We are gathering groups of physicians, APRNs and PAs from all 3 hospitals and some of the hospital-based clinics so that you can meet and recognize those faces you see in the hallways! And in spite of all our electronic devices that track things for us, nothing can replace a calendar on the refrigerator to use for keeping everyone coordinated all year long. NMHS Marketing has gra-

ciously offered to assist with this project and will provide layout and printing to help maximize our bottom line. A huge thank you to all of the groups that are allowing pictures to be used, to Stephen Zubrod and Jenni Stoll with marketing for their support and to Debi Smedlund for taking the photos.

Next up for this committee is a changing of the guard! We welcome the new fundraising chair, Stacey Miskie, and she will establish a new 2017/2018 committee to come up with more amazing activities and events to continue with our goal of adding to the foundation fund. Look for an updated report in the fall newsletter as ideas are generated and put into motion. And as has become an annual tradition,

look for tickets to the 2018 Valentine's Dinner at Lauritzen Gardens starting in January.

If you have any interest in becoming a committee member, or just have ideas for interesting ways to raise money, please contact [janet.syslo2@nmhs.org](mailto:janet.syslo2@nmhs.org) or [Stacey.miskie@nmhs.org](mailto:Stacey.miskie@nmhs.org) to be invited to the first meeting of 2018!



## Program Planning Committee

Amy Brasel

### UPCOMING Events

Mark your calendars, as you won't want to miss this! The program planning committee has set up another wonderful program on September 14, 2017 from 5-6pm on the topic of Nursing Legislation. Melissa Florell, Executive Director of NNA, will present on politics, policy and how nurses can make a difference. This will be held at Methodist College with the exact room number to be announced.

The Nebraska Collaborative Program, typically held in October, is currently in the planning stages. I will keep you informed when more details come out!

## Cowboy Caviar Dip

### Ingredients

**2/3 chopped green onion scallions**

**1 can black eyed peas - drain can**

**1 can white peg corn - drain can**

**Chopped small bunch cilantro**

**1/3 c olive oil**

**1/3 c red wine**

**vinegar**

**1 teaspoon cumin**

**2 cloves garlic**

**Salt and pepper to**

**taste**

**Mix together and chill**

**Add 2 chopped tomatoes and**

**3 avocados before serving.**

**Serve with crackers or vegetables.**



## Chapter Officers

President—Alice Kindschuh, DNP, APRN-CNS, GCNS-BC, CNE

Vice President—Tara Whitmore, DNP, APRN-NP

Treasurer—Jed Hansen, BSN, RN

Secretary—Julie Schlick MSN, RN

Program Committee Chair—Amy Brasel, MSN, RN-BC

Fundraiser Chair—Stacey Miskie BSN, RN, CBN

Publicity/Newsletter Co-Chairs—Deb Adams, MSN, MSHS, RN-BC & Roxanne Gould, MSN, RN

Counselor/Governance Chair—Kathrine Malmberg, MSN, RN & Cheryl Bouckaert, MSN, RN

Membership Involvement Chair—Loretta Pierce, MSN, RN, NE-BC

Leader Succession Committee— Marti Christensen, MSN, RN; Jackie Thielen, MSN, RN, APRN-NP, ACHPN, & Marilyn Voss, MSN, RN, CCM



Sigma Theta Tau International  
**Honor Society of Nursing**